

## SAF DESIGN IN DEPTH 2016 SERIES INNOVATIONS IN ARCHITECTURE

FEBRUARY 16: Tools of the Trade | DESIGN TECHNOLOGY

MARCH 15: The New Regionalism | NORTHWEST DESIGN

APRIL 19: Recycled Sites | ADAPTIVE REUSE

MAY 17: Rooted in Seattle | GLOBAL DESIGN

JUNE 21: Best Laid Plans | URBAN PLANNING

### MODEL EXHIBIT

01.14.16 – 02.05.16 | At the Center for Architecture & Design

SAF's Annual Architectural Model Exhibit engages the public in the work of local designers, giving visitors an inside view into how architectural design happens. The exhibit highlights architectural renderings, hand-drawn sketches, presentation models, study models, animations, design process documentation and more.

This year's exhibit theme, FORM, is a word that can be used as either a noun or a verb, both a thing and an action. FORM can be what exists in the world now and what is taking shape. When paired with a range of prefixes and suffixes, FORM takes on new and unique meanings (reFORM, inFORM, uniFORM). This exhibit explores how local architects integrate the concept of FORM into their design practice.

### WANT DISCOUNTED TICKETS TO LECTURES AND TOURS? BECOME A MEMBER!

SAF members receive discounts on all programs and special members only opportunities. By supporting SAF, members provide a valuable resource that helps shape our community. Whether we're inspiring potential young architects to develop solutions to social issues or educating the general public on critical community development topics, SAF is fostering a deeper understanding of the built environment. Join us. Shape Seattle!

Visit us online or call 206.667.9184 to learn more.

[SEATTLEARCHITECTURE.ORG](http://SEATTLEARCHITECTURE.ORG)



Seattle Architecture Foundation  
@ The Center For Architecture & Design  
1010 Western Ave | Seattle, WA | 98104



Photo credit: Ed White (edwhitephotographics.com)

**Tues 01.19.16 | 6:30 – 8:00PM | Center for Architecture & Design**

Multi-modal options for transportation help create cities that are vibrant, safe, healthy and accessible. How do designers and planners work within their communities to design sustainable transportation networks that help move people from point A to point B? Hear transportation leaders discuss the processes and technologies that help shape our urban mobility.

#### FEATURING:

##### ANDREW GLASS HASTINGS

Mayor Murray's Transportation Advisor,  
City of Seattle

##### ALAN HART

Founding Principal,  
VIA Architecture

##### ELIZABETH KIKER

Executive Director,  
Cascade Bicycle Club

##### KAREN KITSIS

Senior Manager for Planning and Project  
Development, Sound Transit

##### PAUL ROYBAL

Senior Transportation Planner for Transit  
Route Facilities, King County Metro Transit

##### LISA QUINN (MODERATOR)

Executive Director, Feet First

>> Share your notes and photos from tonight's lecture #DesignInDepth



GRANTMAKER



CULTURE  
KING COUNTY LODGING TAX

SERIES SPONSOR

LMN  
Architecture  
Urban Design  
Interiors

GOLD SPONSORS

AIA SEATTLE  
ANKROM MOISAN

DESIGN THAT MOVES YOU

## URBAN TRANSIT | PANELISTS

design  
depth

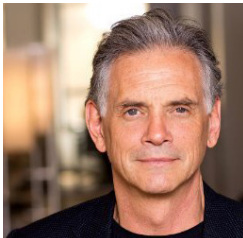


### ANDREW GLASS HASTINGS

Mayor Murray's Transportation Advisor, City of Seattle

Andrew Glass Hastings has been a leader on key transportation policies, initiatives, and political campaigns in Seattle for more than ten years. Andrew managed the successful \$18 billion Sound Transit 2 campaign and worked collaboratively to solve complex policy and political issues in the Seattle and King County Departments of Transportation and the office of former Mayor

Greg Nickels. He currently serves as the transportation advisor to Seattle Mayor Ed Murray and recently helped lead the successful Move Seattle effort. Andrew has an MS Public Policy from the University of Southern California and a degree in Community and Regional Development from University of California, Davis. He lives with his wife and two sons in the Greenlake neighborhood in Seattle and enjoys soccer – both playing and as an avid Sounders fan.



### ALAN HART

Founding Principal, VIA Architecture

A strong advocate for clarity and integrity in the planning and design process for over 30 years, Alan Hart consistently champions the importance of infrastructure and multi-modal connectivity as an integral part of community vision. Alan has built a reputation finding opportunities for innovation in unlikely places, creating high-quality urban environments from transit systems to urban

master plans. From an early stage in his career Alan has aimed to use his passion for architectural and transit design and his skills as an urban planner to help create integrated, sustainable communities. Alan is Founding Principal of VIA Architecture, with offices in Vancouver, Seattle, and San Francisco.



### ELIZABETH KIKER

Executive Director, Cascade Bicycle Club

Cascade Bicycle Club is the largest local bike club and advocacy organization in the country, with 15,000 members. Kiker has served as the Executive Director of the club since September 2013, leading a staff of 41. The goal of the club is to improve lives through bicycling, and they do that through education, advocacy, outreach and events. The annual Seattle to Portland ride attracts 10,000

people each year, and starting in 2016 the education program will reach every elementary school student in Seattle Public Schools, as well as three other school districts in the region. Kiker has worked in bicycle advocacy since 2005, and is an avid bike commuter and recreational rider with her husband and three young children (7,6, and 4).



### KAREN KITSIS

Senior Manager for Planning and Project Development, Sound Transit

Karen Kitsis is a Project Manager for Planning and Project Development where she manages the long-range planning team developing the Sound Transit 3 system plan. She has been with Sound Transit for 3 years. She has a Masters in Urban Planning from UCLA, and is a certified planner with the American Institute

of Certified Planners. Karen also has over 10 years of transportation and transit planning experience in the private and public sectors, with agencies both in the west and eastern areas of the US.



### PAUL ROYBAL

Senior Transportation Planner for Transit Route Facilities , King County Metro Transit

Paul is a senior transportation planner with King County Metro Transit specializing in capital project planning and implementation. Paul is King County's planning lead on the Third Avenue Transit Corridor Improvements project, a joint effort between King County and the Seattle Department of Transportation. In addition

to nearly 30 years of experience in the transit industry, Paul holds master's degrees in Business Administration and Architecture from the University of Washington.



### LISA QUINN (MODERATOR)

Executive Director, Feet First

Since 1993, Lisa Quinn has been involved in sustainable transportation starting her career at a Transportation Management Association in Santa Clara, California and a consulting firm in Palo Alto, California. She traveled to the Pacific Northwest and worked for the City of Tacoma, the University of Washington, and then to the San Luis Obispo Council of Governments on

the Central Coast of California. She has worked at numerous non-profits, including BEST (Better Environmentally Sound Transportation) in Vancouver, Canada. She has developed award winning social marketing campaigns, facilitated and trained employees, received over \$500,000 in grants, and designed programs in which every \$1 spent generated \$5 in volunteer and business contributions. Lisa graduated from San Jose State University with a B.S. in Advertising and an emphasis on sociology and environmental studies.